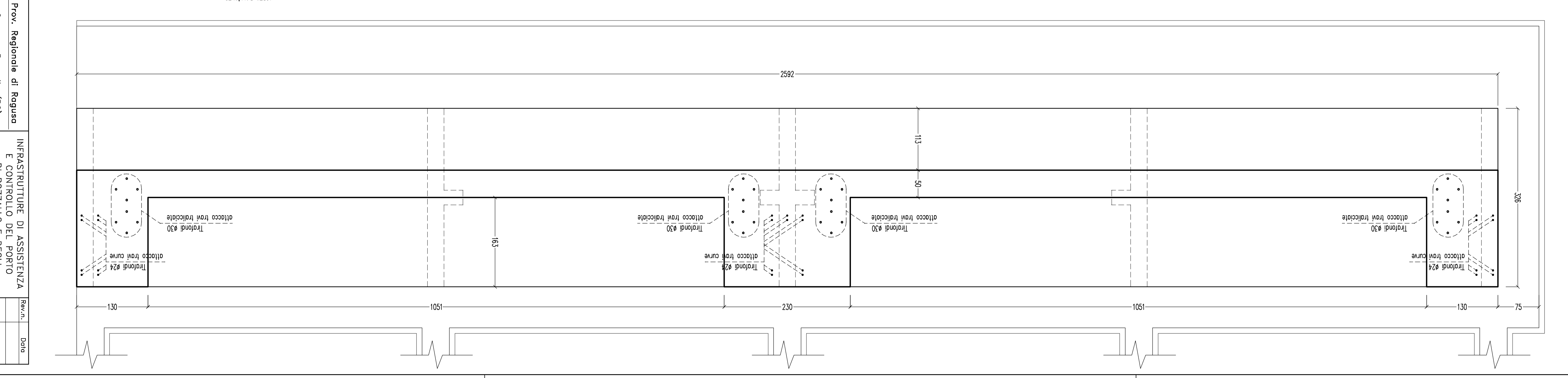
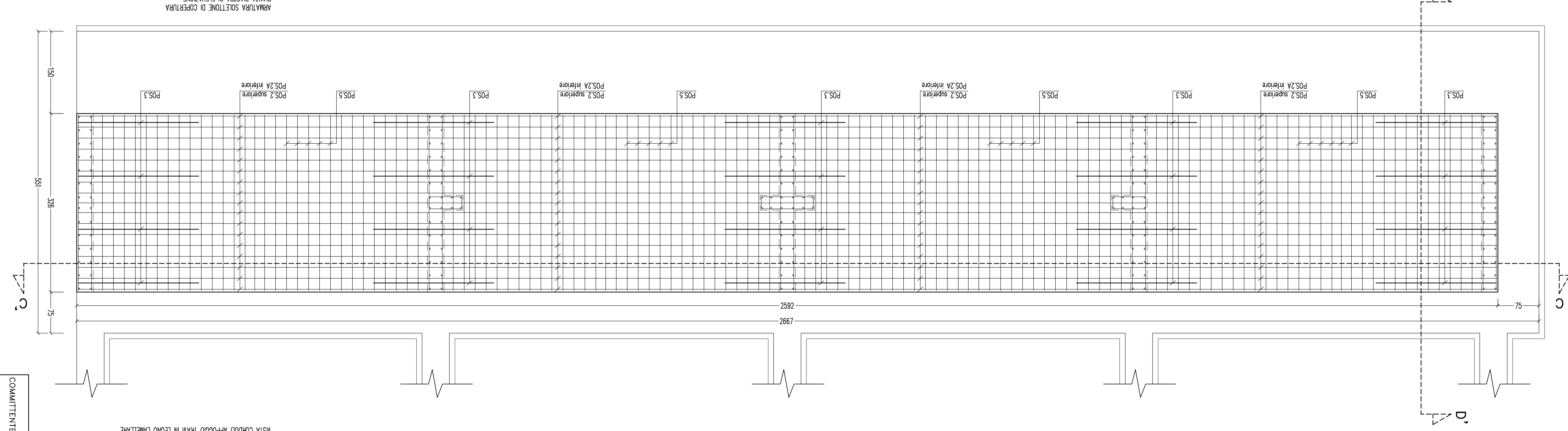
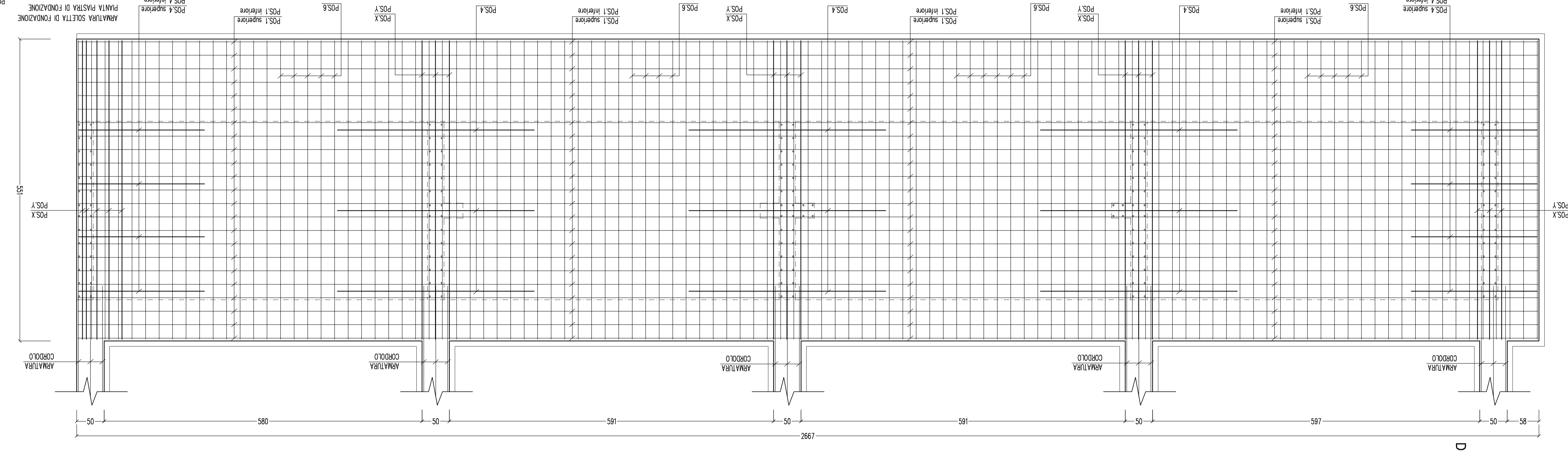
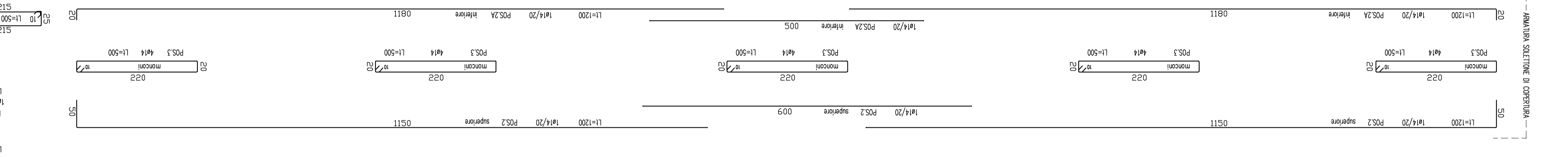
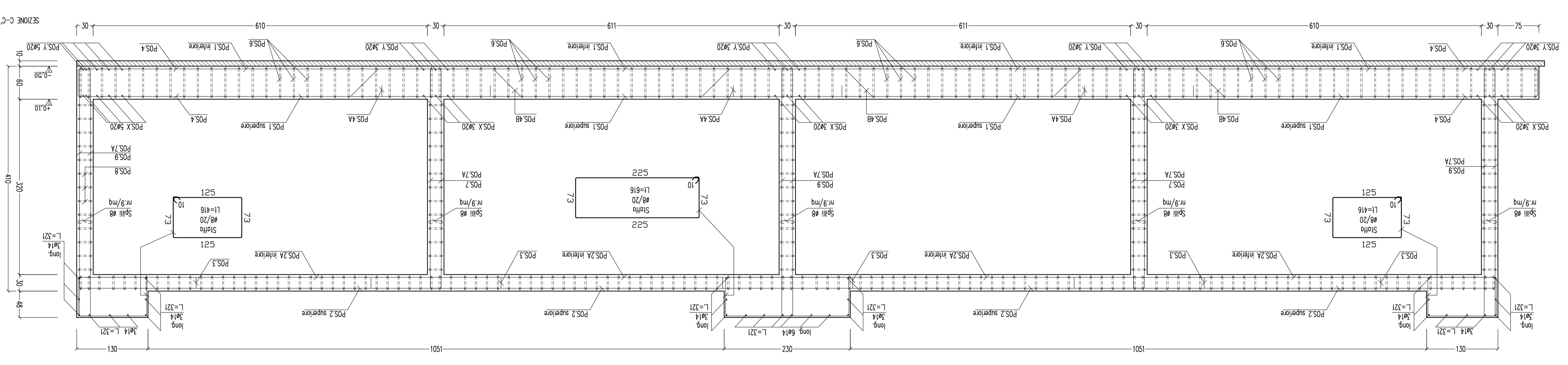
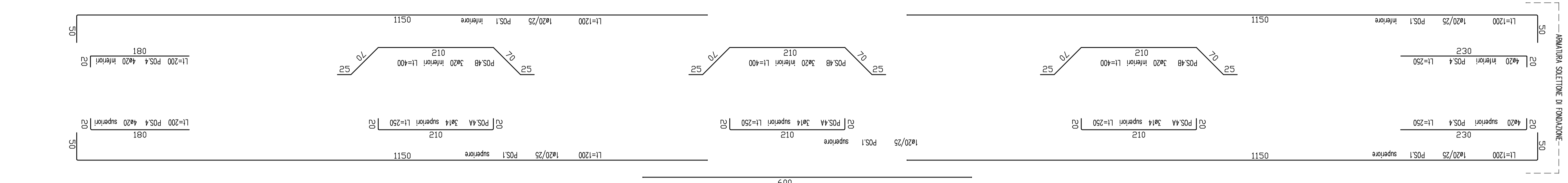
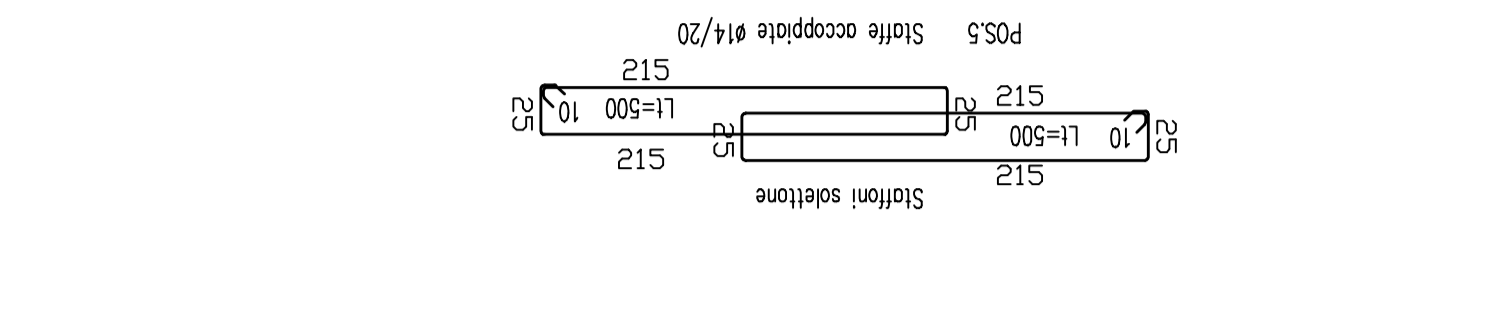
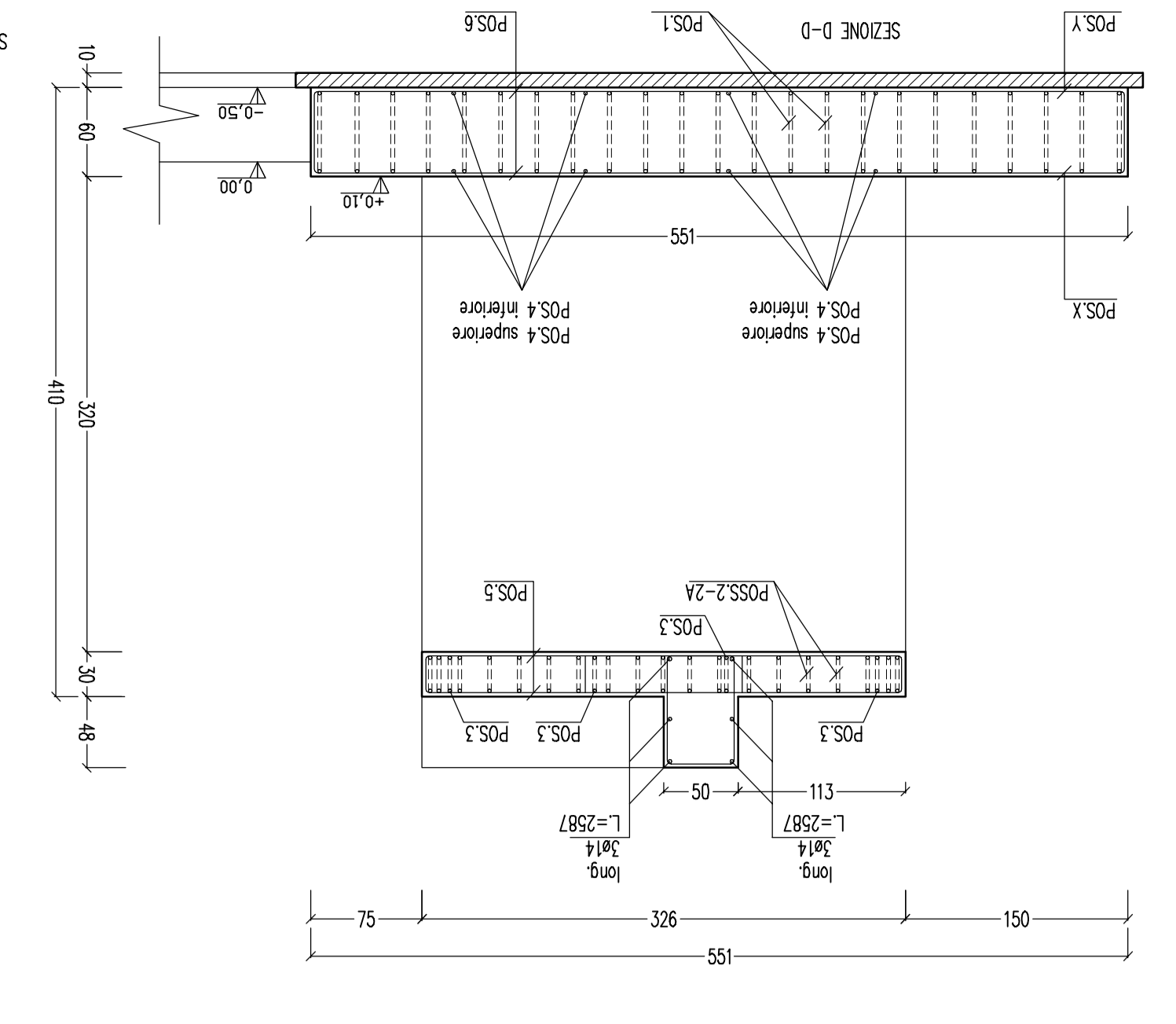


MATERIALI:  
-CLASSE DI RESISTENZA C25/30  
-BARRI DI ACCIAIO ADERENZA MIGLIORATA TIPO B450C



COMITENTE		Prox. Regione di Bologna Comune Pazzolo (BO)	
LOCALITÀ		INFRASTRUTTURE DI ASSISTENZA E CONTROLLO DEL PORTO AGLIONERATI INDUSTRIALI	
OGGETTO		Stazione di servizio passeggeri porto di Pazzolo peschiere MONDELLOCHI 'A' e 'C' (Specchio) - ESECUTIVO IN CA.	
Studio	Scala	Prodotto N.	DATA
Defn. Imp.	1:40	S/1103	
Disegn.	D1.9	Progettato da:	Defn. Imp. G. Molteni
		Verificato da:	Defn. Imp. G. Molteni
		Collaboratori:	Defn. Imp. G. Molteni
SILACIOSA		Via Dalmazia 4/6 - 40131 Bologna - Tel. 051/411448	
Studio		SILACIOSA	
Defn. Imp. C. MOLTISANI		SILACIOSA	
Disegn. A.M.		SILACIOSA	